

**CROWN
PARK**
✦ 1 & 2 BHK HOMES ✦



Step Into A Lavish Masterpiece!



ARIHANT
G R O U P





CROWN PARK

₹1 & 2 BHK HOMES

You have always admired the finer things in life.
No wonder you expect your home to match your
success and status..!

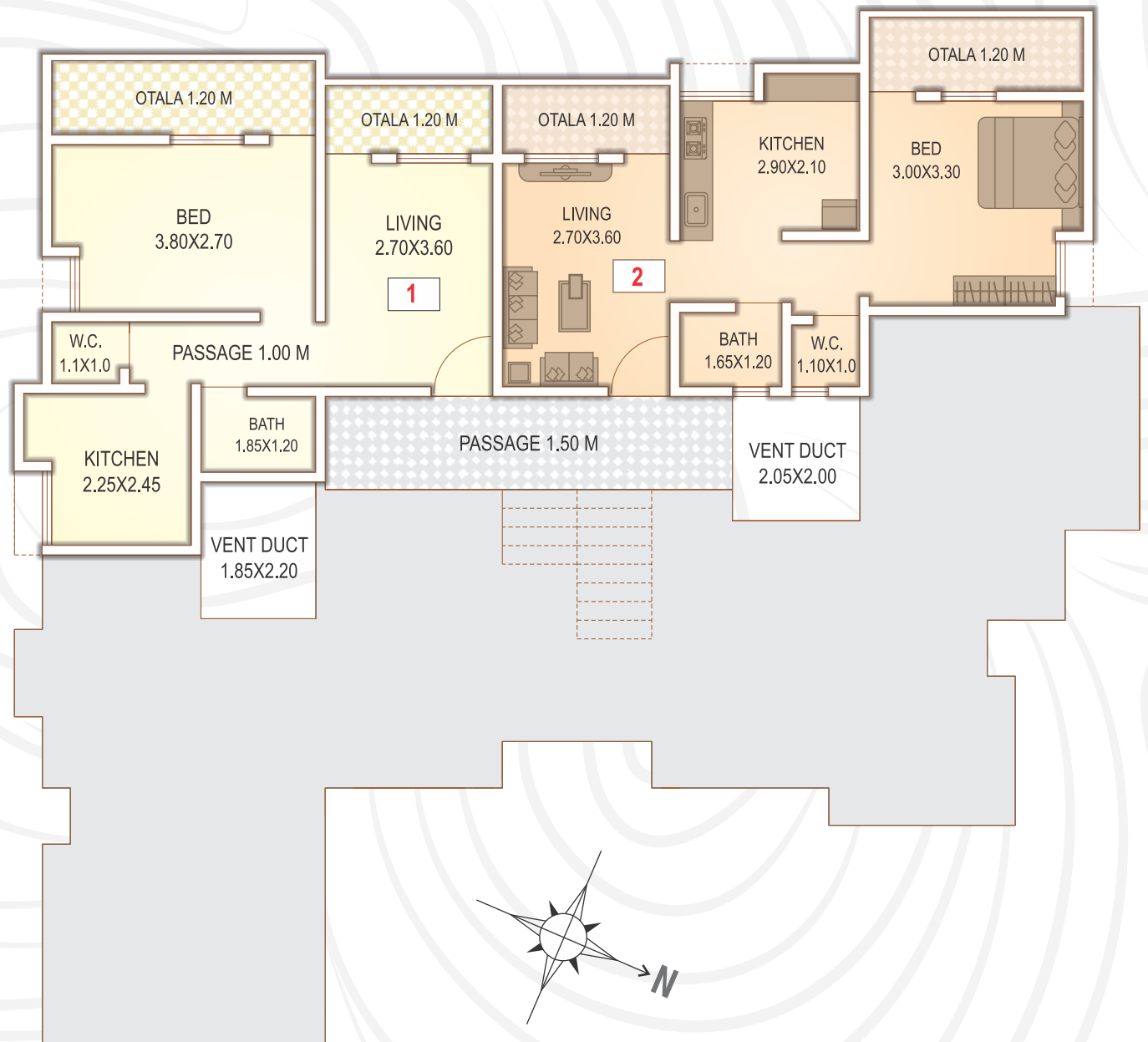
Presenting Crown Park, an exclusive project of
elegant 1 & 2 BHK homes.

Situated at Ratnagiri -Kolhapur Highway,
Behind Sanskruti Garden near NKCSB Bank in Ratnagiri,
Crown Park offers homes that symbolize the
right mix of space and grace, luxury and charm.

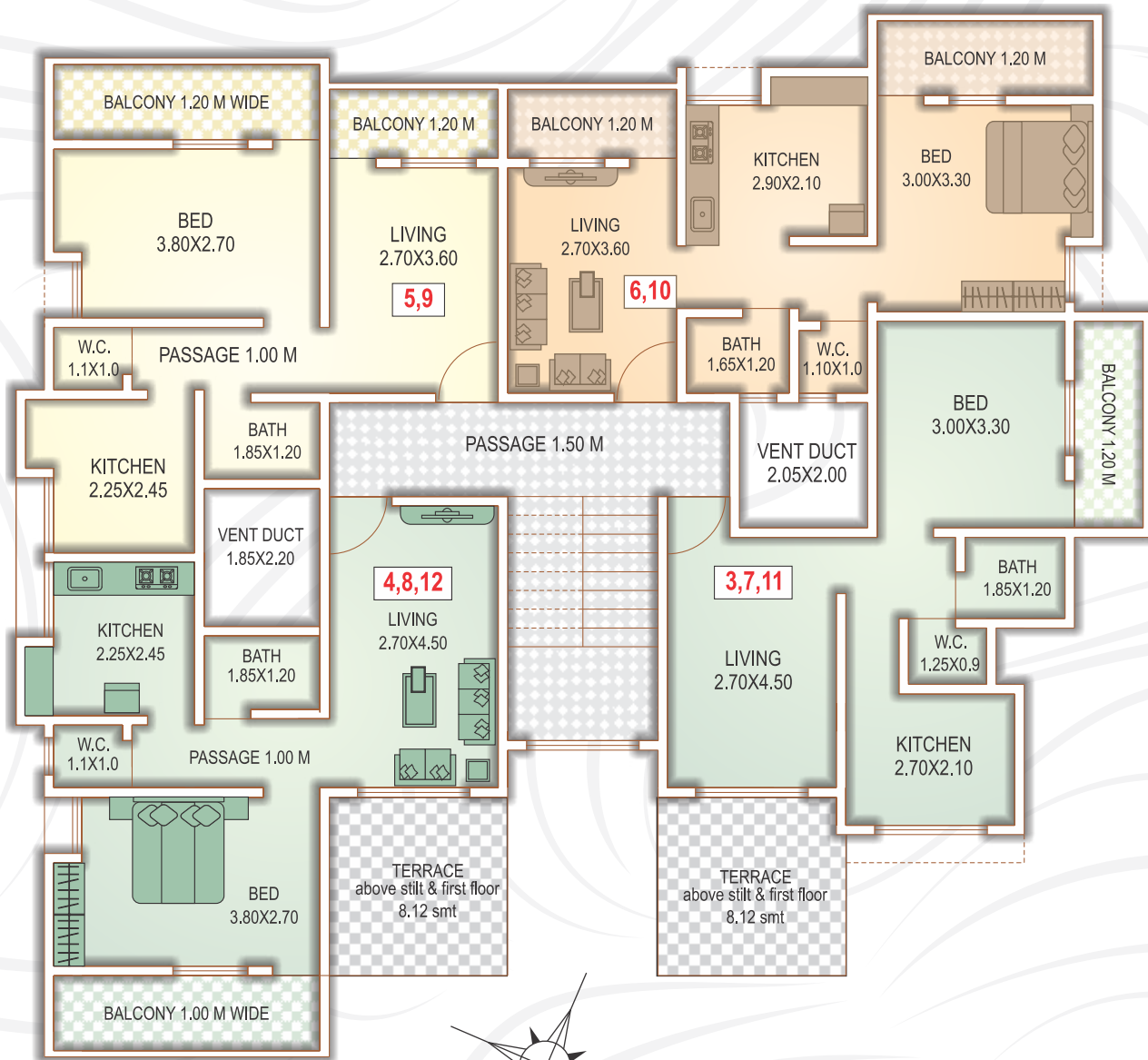




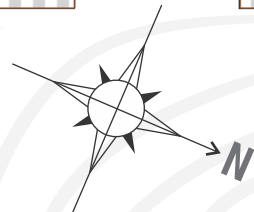
BUILDING - "A"



GROUND FLOOR PLAN
WITH PART STILT



ABOVE STILT GROUND, FIRST & SECOND FLOOR PLAN

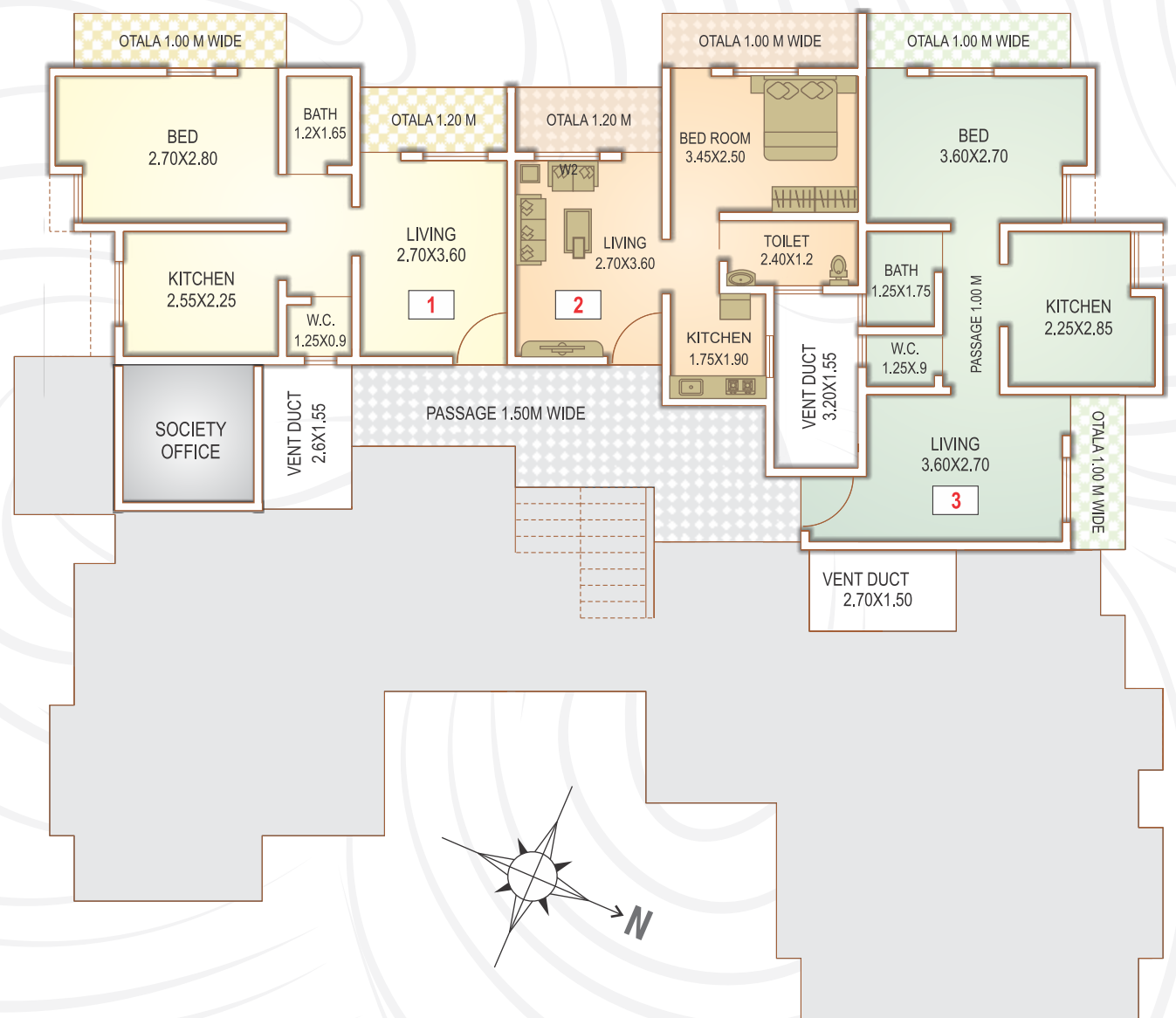


**CROWN
PARK**
1 & 2 BHK HOMES

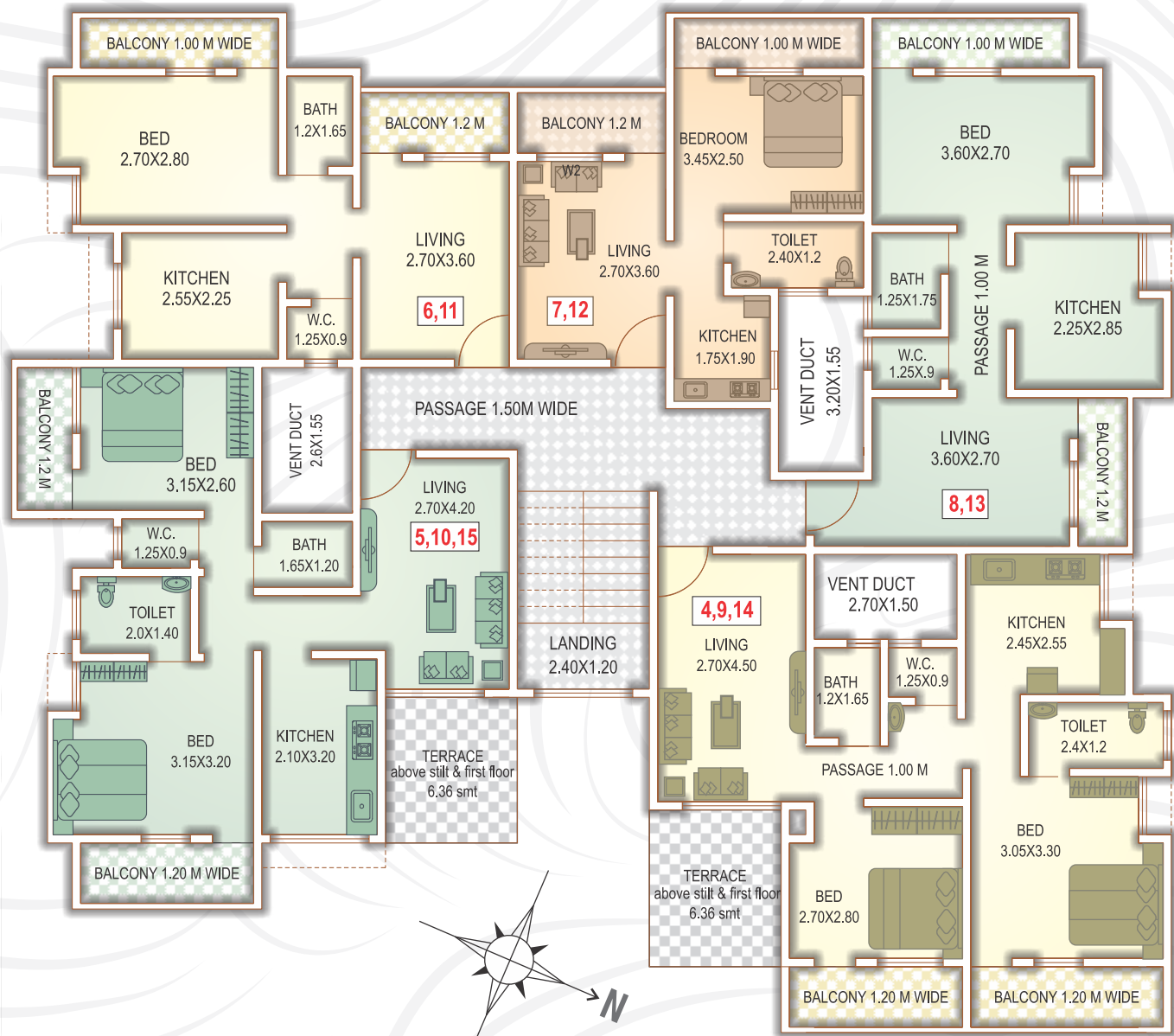




BUILDING - "B"



GROUND FLOOR PLAN
WITH PART STILT



ABOVE STILT GROUND,
FIRST & SECOND
FLOOR PLAN

**CROWN
PARK**
1 & 2 BHK HOMES





BUILDING - "C"



GROUND WITH
PART STILT



ABOVE STILT GROUND,
FIRST & SECOND
FLOOR PLAN

**CROWN
PARK**
1 & 2 BHK HOMES





Good planning with great attention to detail is the strong foundation on which Crown Park proudly stands.

Homes here are well ventilated with ample natural light, while the premium quality internal fittings turn your everyday life into a pleasant, comfortable experience.

Step out and you will be greeted by

Three Building that is A, B & C .

A superb location, together with best-in-class amenities, makes Crown Park truly the right home that lives up to your aspirations.

**CROWN
PARK**
1 & 2 BHK HOMES

SPECIFICATIONS

STRUCTURE

- ◆ Earthquake resistant R.C.C. Structure
- ◆ 6' thick external & 4' thick Lite rate stone walls
- ◆ Sand-faced external plaster & Putty finish internal plaster

DOORS

- ◆ Decorative main door with wooden frame and internal flush door
- ◆ Marble frames for Toilet & Bathroom

WINDOWS

- ◆ 3 track Aluminium powder coated windows with grill
- ◆ Louvers windows in W.C. & Bathroom
- ◆ Marble window sills

FLOORING

- ◆ Branded Vitrified tiles for entire flat
- ◆ 12"X18" tiles for Bathrooms, Toilets, Flower Beds & Pocket Terrace

KITCHEN

- ◆ Granite platforms with S.S. Sinks
- ◆ Designer tiles
- ◆ One side Loft
- ◆ Water purifier

ELECTRIFICATION

- ◆ Copper wiring
- ◆ Provision for A/C points in M. Bedroom
- ◆ TV & Telephone point in living room
- ◆ Modular Switches
- ◆ Circuit Breaker
- ◆ Tube light & Fan in Living & Bedroom (ISI Marks)

PAINTING

- ◆ Distemper for internal walls
- ◆ Water proof Acrylic paint to external walls
- ◆ Anti termite treatment

TOILETS

- ◆ Concealed plumbing work
- ◆ Wash basin
- ◆ Good quality Sanitary fittings With wall mixture
- ◆ Designer glazed full tiles
- ◆ Provisions for loft tank

Layout Plan



ARIHANT
G R O U P

Crown Park is a project by ARIHANT VASTU NIRMAN PVT. LTD., which is a team of renowned people backed by 25 years of experience in the civil contracting business. With a focus on transparency, customer commitment and superb quality of construction, ARIHANT VASTU NIRMAN PVT. LTD. endeavours not just to raise structures but to create everlasting landmarks. And along the way, we look to build enduring relationships with our valued customers.

Credits

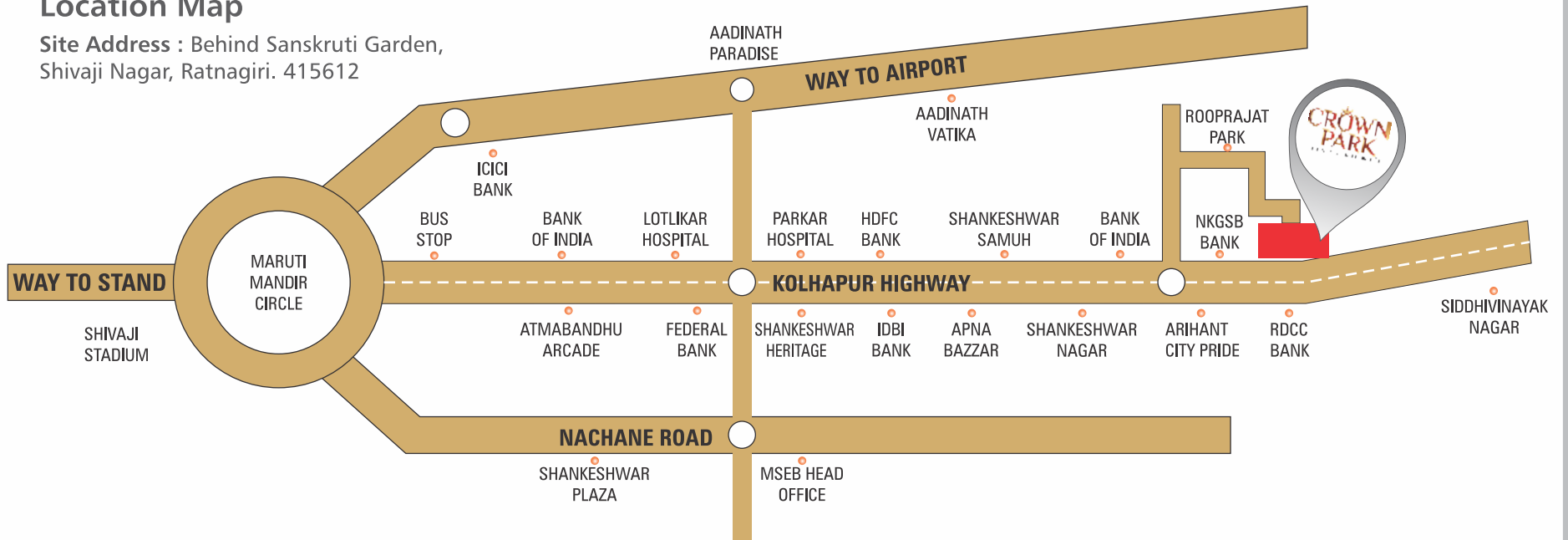
Architects
Satish Mestri
Mob. 9422430501

R.C.C Consultant
Sandeep Shetye
Mob. 9422436533

Tax Consultant
K. Mundra & Associates
Mumbai. Mob. 9820970907

Location Map

Site Address : Behind Sanskruti Garden,
Shivaji Nagar, Ratnagiri. 415612



ARIHANT VASTU NIRMAN PVT. LTD.

Siddhivinayak Community Center, 1st Floor, Siddhivinayak Nagar, Shivaji Nagar, Ratnagiri : 415612.

Website : www.arihantconstructions.com Email : manoj@arihantconstructions.com

Phone : 02352-223952, 223352, 223552, 223152, 223052 / Mobile : 9011086861 to 7, 9422665914.