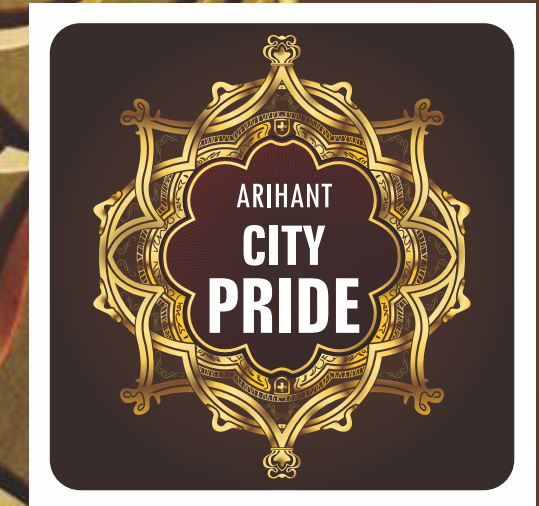


Credits
 Architects
ABHINAV JOGI ASSOCIATES
 ISO 9001 - 2000 CERTIFIED
 Tel No. - 9930997799.

R.C.C Consultant
 Manoj Joshi
 Mob. 94224 31064

Tax Consultant
 K. Mundra & Associates
 Mumbai. Mob. 9820970907



A MASTERPIECE THAT
 WILL MAKE YOU PROUD!



ARIHANT VASTU NIRMAN PVT. LTD.

Siddhivinayak Community Center, 1st Floor, Siddhivinayak Nagar, Shivaji Nagar, Ratnagiri : 415612.

Website : www.arihantconstructions.com Email : manoj@arihantconstructions.com

Phone : 02352-223952, 223352, 223552, 223152, 223052

Mobile : 9011086861 to 7

NOTE : All the Plans, Layout ,Drawings, Amenities, Specifications, Facilities etc. are subject to approval of the respective authorities and may be subject to change at the sole discretion of the developers.

aifm : 9422016373

A PROJECT BY
 ARIHANT VASTU NIRMAN PVT. LTD.



HAPPINESS BEGINS AT HOME

After a busy day at work, peace and privacy is what we most desire...

Welcome to Arihant City Pride!

Enter a delightful world where serenity and style greet you at the doorstep.

Strategically located in central Ratnagiri, Arihant City Pride symbolizes the right blend of tranquility, comfort and convenience. Planned with precision, the project prides on its top-notch amenities designed to offer you a relaxed, healthy lifestyle.

A premium property development situated in peaceful surroundings, Arihant City Pride is indeed your proud, new home!

The project is the brainchild of Arihant Vastu Nirman Pvt. Ltd., a trusted Company that is known to build lifelong relationships with customers through its focus on Quality, Reliability and Transparency.



Four trendy towers of four floors each make up Arihant City Pride. Widely spread out with ample greenery on all sides, the project offers you a choice of spacious 1 & 2 BHK homes graced by beautiful views and superb privacy.

Situated in the upscale Shivaji Nagar locality of Ratnagari, Arihant City Pride is a well-planned project offering good connectivity to all parts of the city as well as the Mumbai-Goa Highway (NH 17).

Whether it is the market, hospitals, schools & colleges or entertainment centers, all day-to-day facilities are within your easy reach.



In-depth planning with attention to detail is the solid foundation on which the project stands.

Beautiful landscaping, wide open areas and delightful greenery create a refreshing outdoor space. A simple evening walk in the cool breeze will really recharge you!

Arihant City Pride brings you a splendid lifestyle with its best-in-class amenities. Whether it is fitness, recreation or relaxation, all your needs are easily fulfilled.



COMPLEX AMENITIES

Pleasant and elegant outdoors

- ◆ Grand entrance gate
- ◆ Decorative compound wall
- ◆ Attractive elevation
- ◆ Decorative Entrance lobby

Maximizing your convenience

- ◆ Ample parking
- ◆ Lift with power back-up
- ◆ Internal roads with Street Lights
- ◆ Ample lighting for common areas

Crafted for your health and leisure

- ◆ Children's play area
- ◆ Landscaped garden
- ◆ Party lawn
- ◆ Open Air Yoga & Meditation Space
- ◆ Senior Citizen Sit out

Safety is the first priority

- ◆ Security cabin
- ◆ Well marked internal roads



SPECIFICATIONS



STRUCTURE

- ◆ Earthquake resistant R.C.C. Structure
- ◆ 6' thick external & 4' thick Lignite stone walls
- ◆ Sand-faced external plaster & Putty finish internal plaster

DOORS

- ◆ Decorative main door with wooden frame and internal flush door
- ◆ Marble frames for Toilet & Bathroom

WINDOWS

- ◆ 3 track Aluminium powder coated windows with grill
- ◆ Louvers windows in W.C. & Bathroom
- ◆ Marble window sills

FLOORING

- ◆ Branded Vitrified tiles for entire flat
- ◆ 12"X18" tiles for Bathrooms, Toilets, Flower Beds & Pocket Terrace

KITCHEN

- ◆ Granite platforms with S.S. Sinks
- ◆ Designer tiles
- ◆ One side Loft
- ◆ Water purifier

ELECTRIFICATION

- ◆ Copper wiring
- ◆ Provision for A/C points in M. Bedroom
- ◆ TV & Telephone point in living room
- ◆ Modular Switches
- ◆ Circuit Breaker
- ◆ Tube light & Fan in Living & Bedroom (ISI Marks)

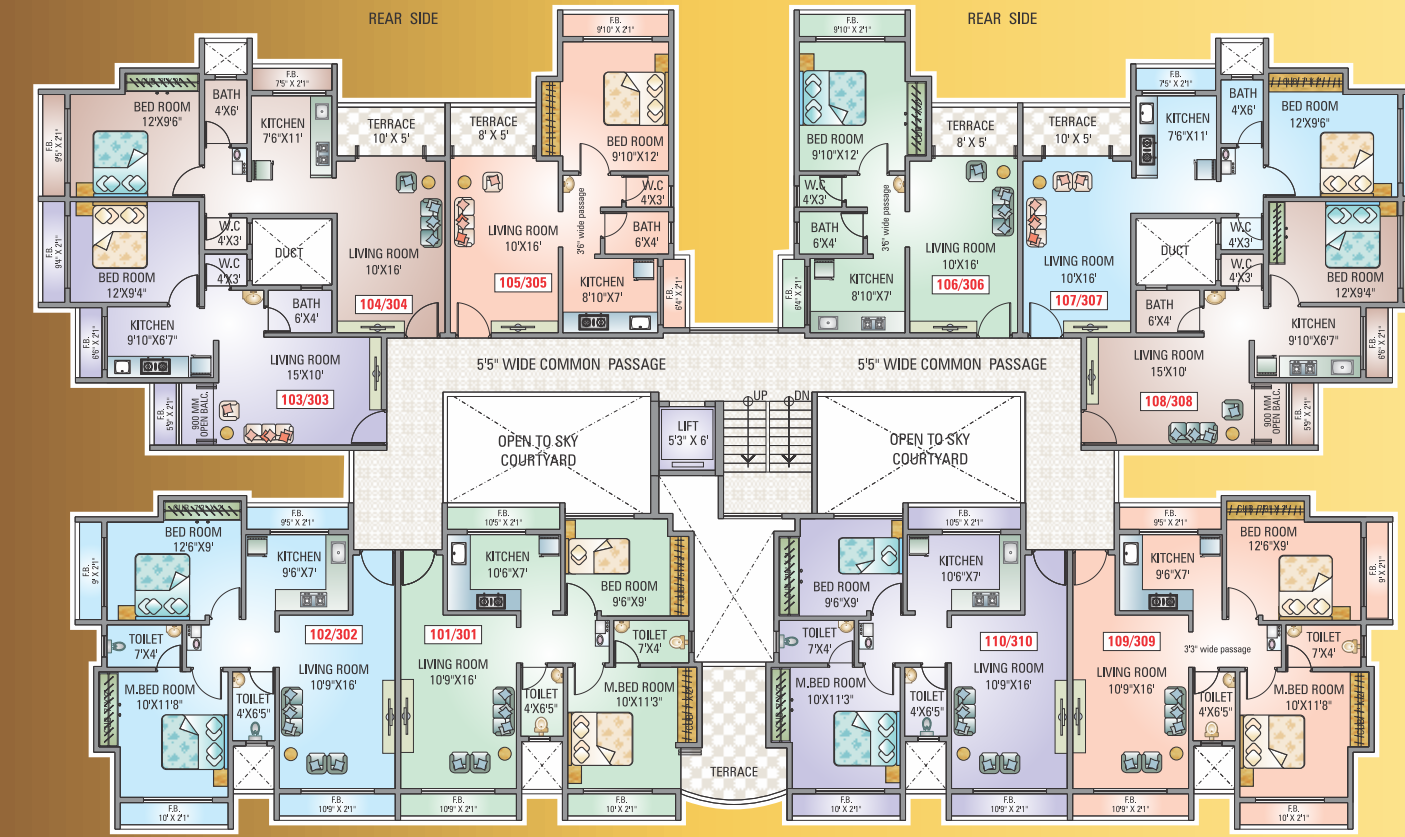
PAINTING

- ◆ Distemper for internal walls
- ◆ Water proof Acrylic paint to external walls
- ◆ Anti termite treatment

TOILETS

- ◆ Concealed plumbing work
- ◆ Wash basin
- ◆ Good quality Sanitary fittings With wall mixture
- ◆ Designer glazed full tiles
- ◆ Provisions for loft tank

Glory



FIRST & THIRD FLOOR PLAN

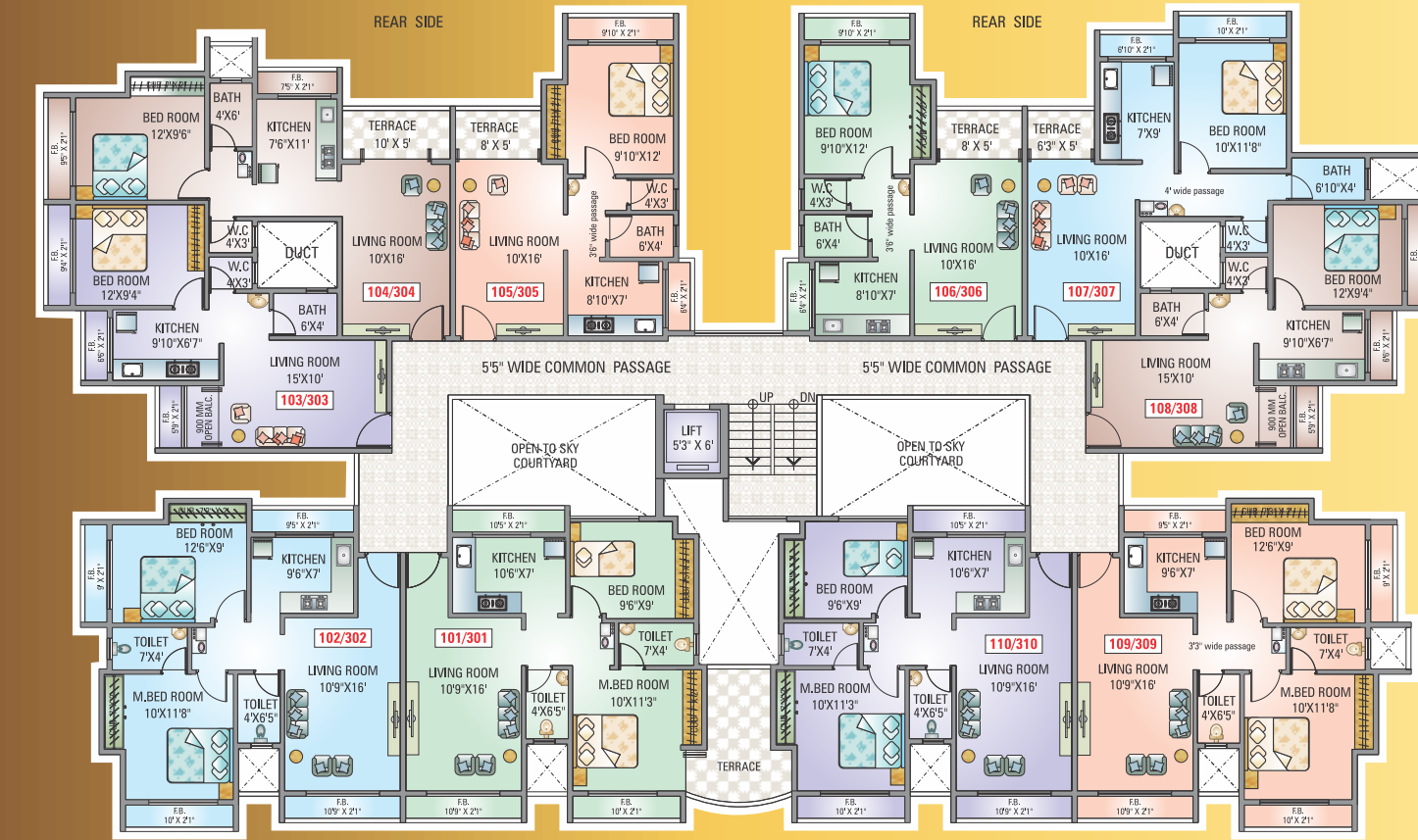
The right mix of comfort and class
Experience style in every corner of your home. Branded, high quality fittings and accessories not only make your life comfortable but they also add a touch of grace.



SECOND & FOURTH FLOOR PLAN

Glory

Orchid



FIRST & THIRD FLOOR PLAN

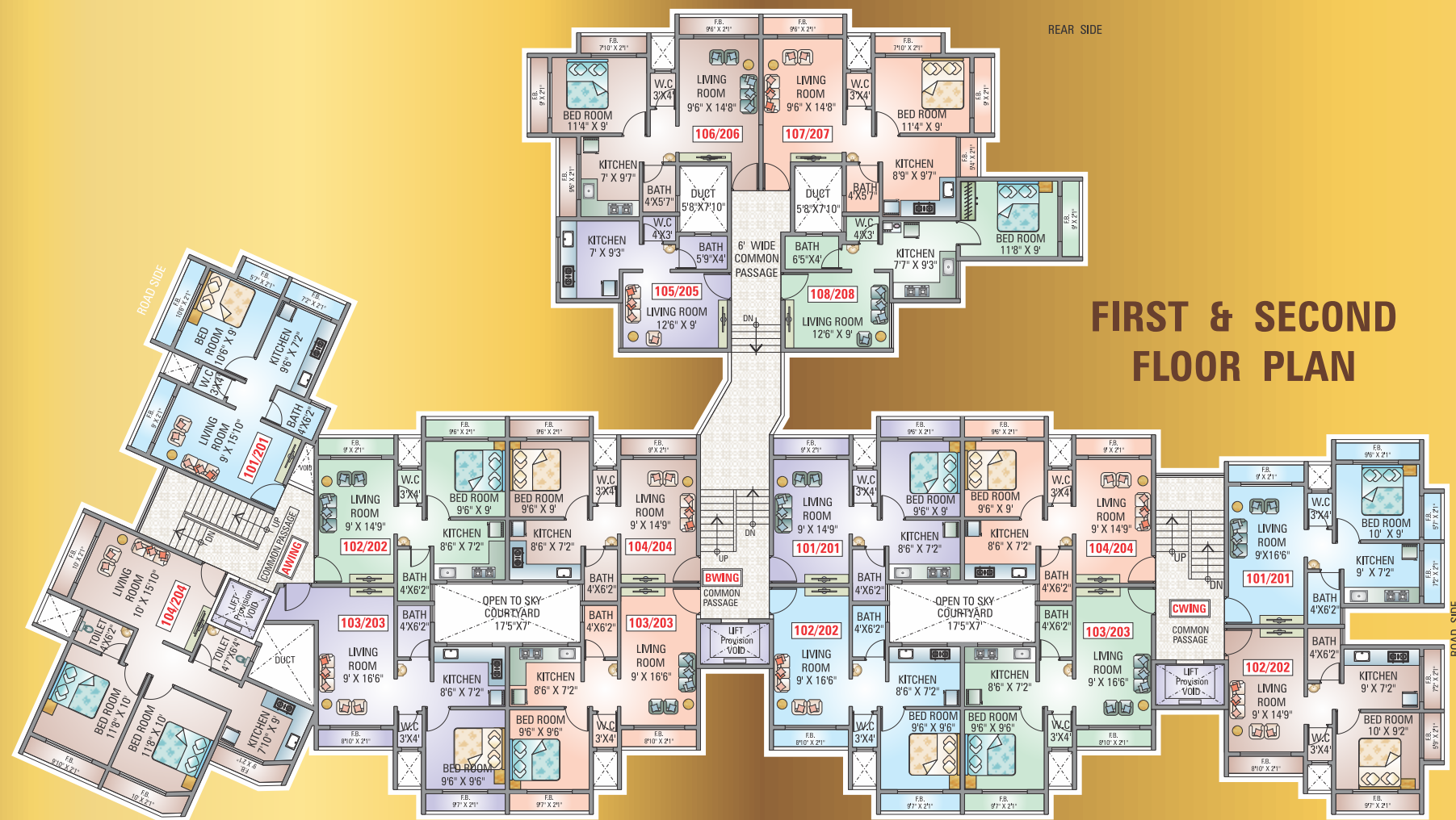


SECOND & FOURTH FLOOR PLAN

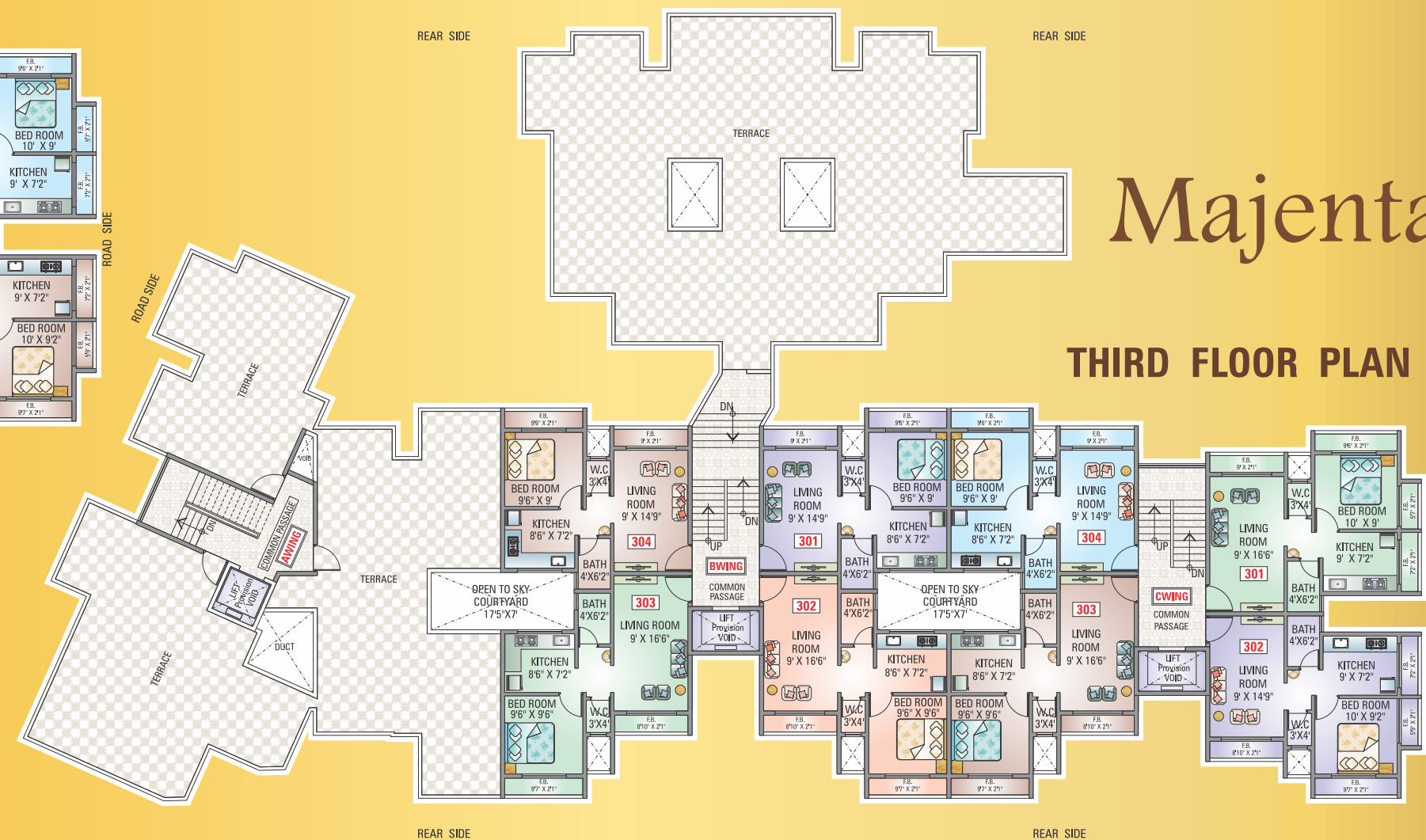
Decidedly different design
Sensible design results in excellent ventilation with optimal space utilization. Ample natural light and air in the rooms create a nice feel right across the house.



Majenta



FIRST & SECOND FLOOR PLAN



THIRD FLOOR PLAN

Architecture inspired by elegance

Splendidly rising above the landscape with its striking elevation, Arihant City Pride is a landmark project that will make you truly proud.

Majenta